

GWINNER

Snake eats own tail.



A

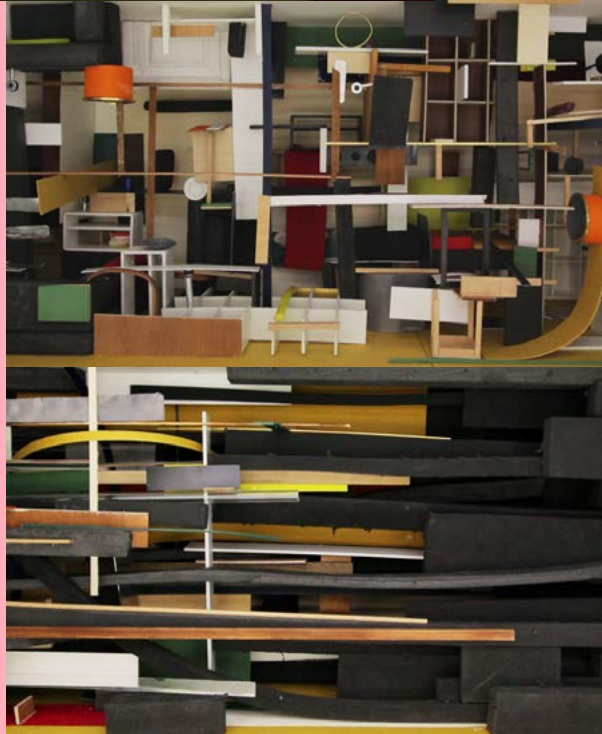
**VIDEO
MODEL**

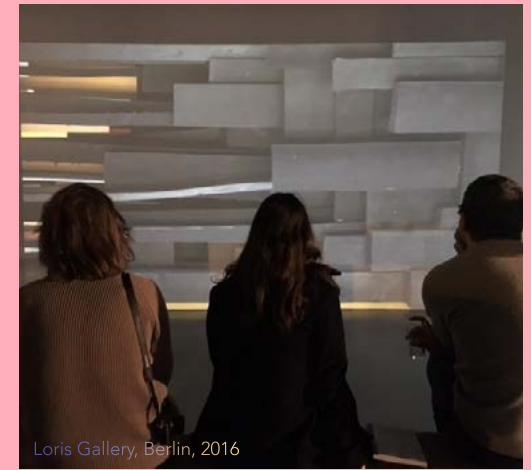


**THE THINGS
(europe)**

WATCH HERE

video, installation,
23 min, loop, stereo, fullHD
model, 1200 x 180 x 40 cm





Loris Gallery, Berlin, 2016

The video installation THE THINGS (europe) consists of a video and its main protagonist, a model of 12 m length of a repeating room. The video part exhibits the model in such a way that the materials of the furnishing constantly change, while their basic deployment remains the same. In the second part, the room gradually changes into black surface, ending up on a circular car ride meditation. The repetition of variations of the same: Furniture, Traffic, Europe, Campains.

TO FIT TO FADE

video
6 min, FullHD



The creature in TO FIT, TO FADE enters a house filled with life and social interaction. Feeling like an outsider it starts to modify its body. But instead of getting a part of the community it gets a part of the house.



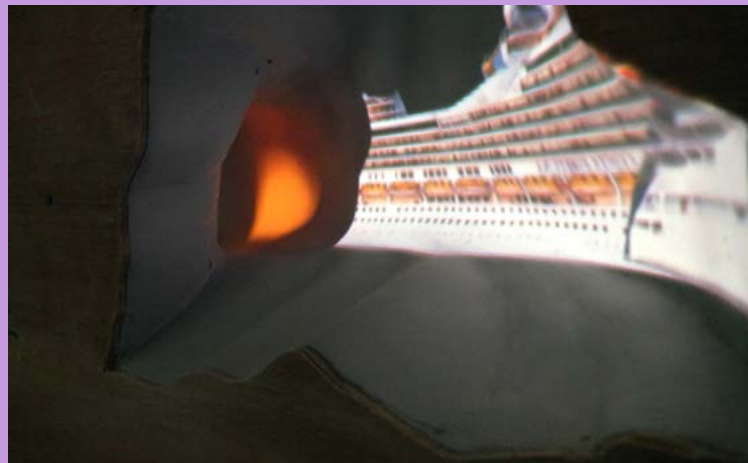
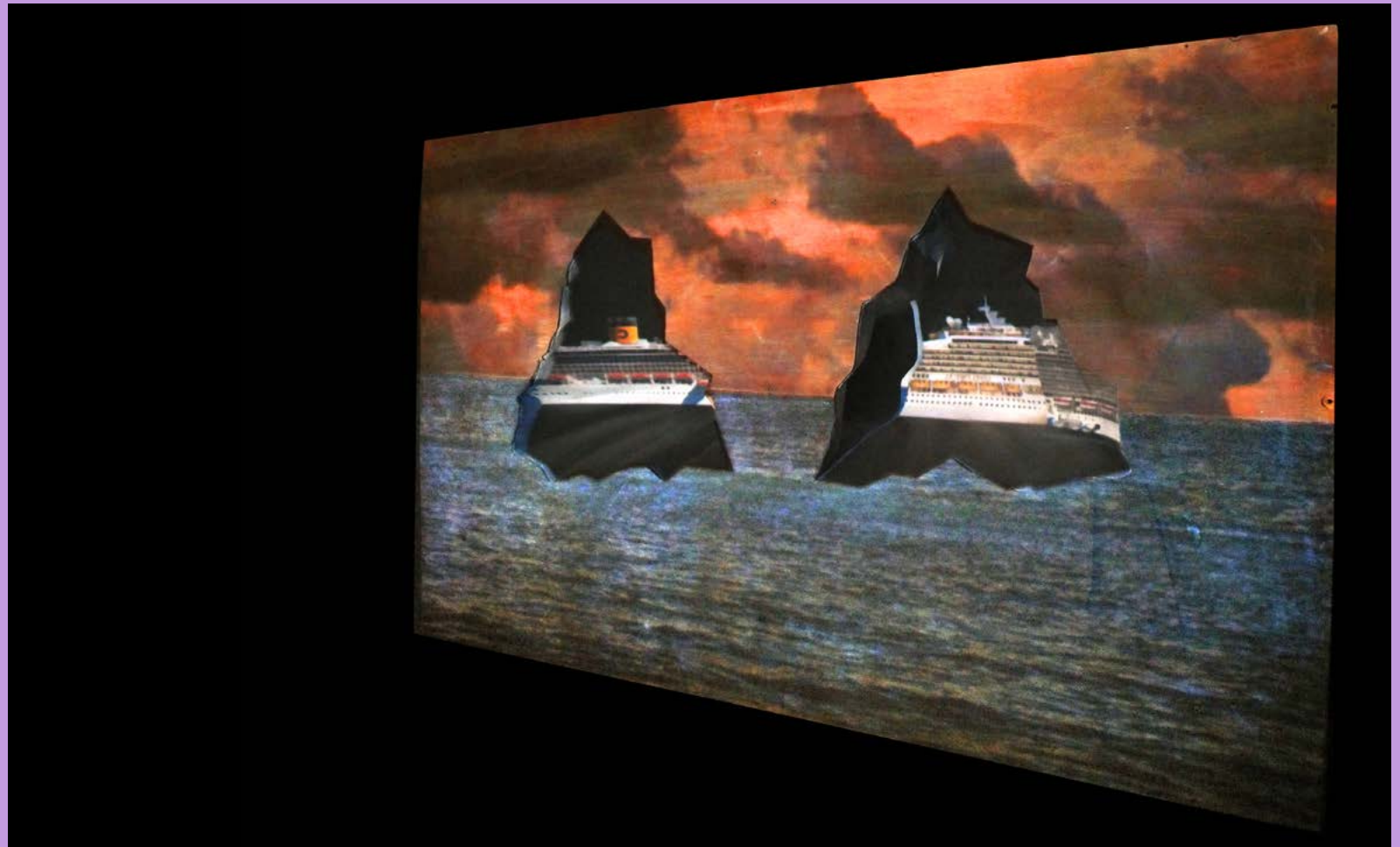
(Z)orten, 2019



video stills

TUNNEL

video tableau
wood, plaster, videoloop



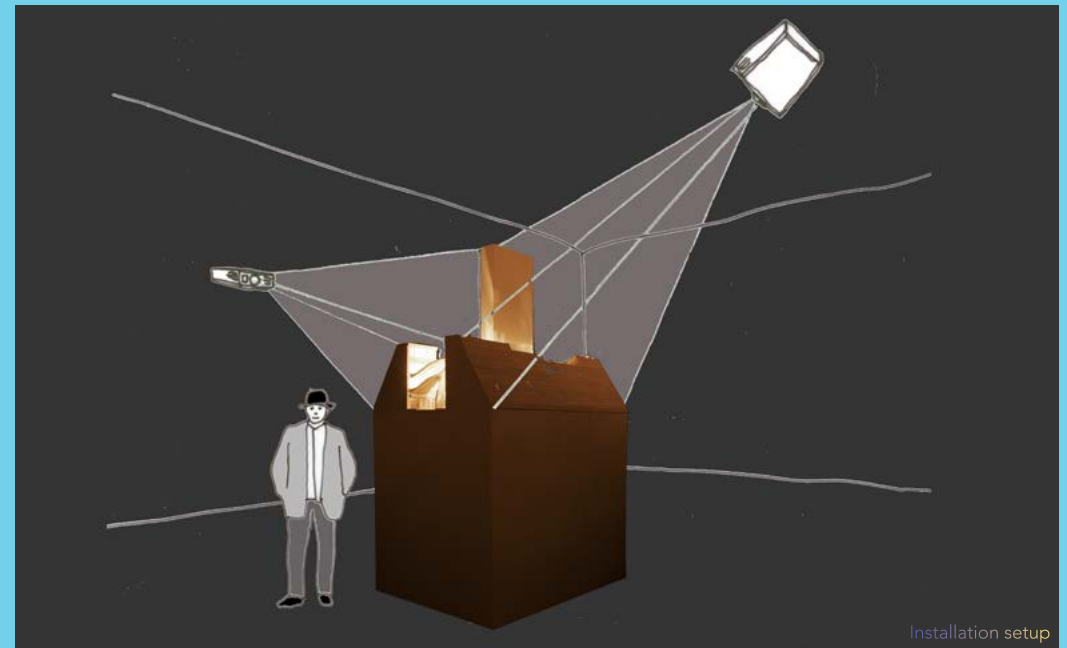


object

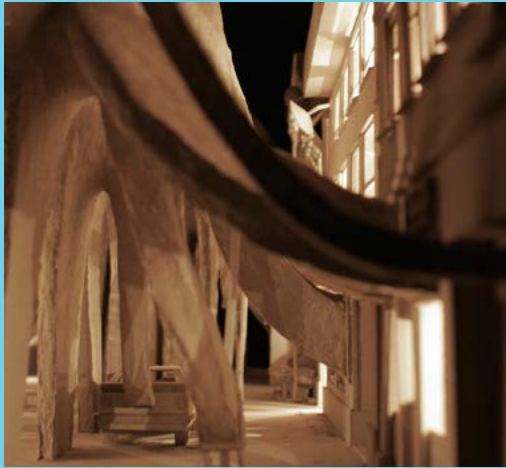
QUALLE

WATCH HERE

video sculpture
cardboard, paper maché, projections
120 x 160 x 300 cm

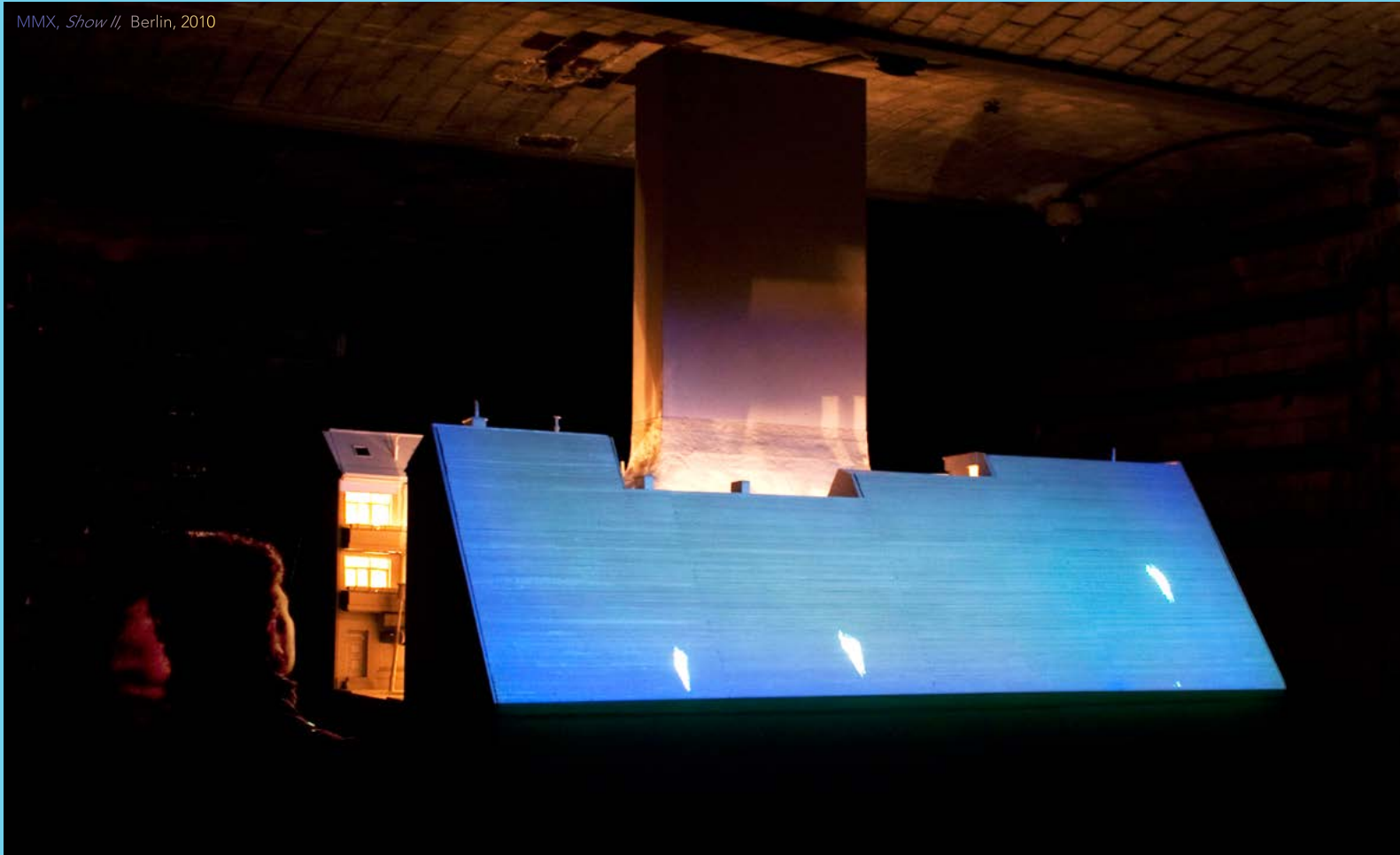


Installation setup



object details

Roots come out of the traffic and shop signs in the model of a city street. They converge in a monolith that reaches for the sky. At the backsides of both rows of houses monumental stairs lead to the building highest ridge. Videos of people trying to climb up the stairs and struggling to get to the top are cut short by the tools that made the model. A self-defeating cycle.



MMX, *Show II*, Berlin, 2010

In DECORATION the camera spins around its own axis. Different arrangements merge. A mini evolution of the constructedness of the world.

DECORATION

[WATCH HERE](#)

video, video installation
5:22 min, loop, stereo, digibeta



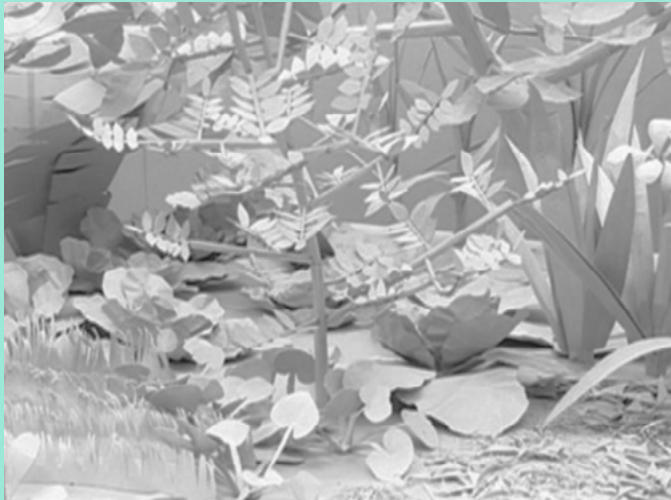
Zeche Zollverein, Essen



video still



video stills



THE MODEL

[WATCH HERE](#)

video, video installation
6:14 min, loop, stereo, MiniDV



video still



The camera moves slowly
backwards through THE MODEL. It
comes to a stop in the middle of a room.
Reality is chasing its own tail.



C

BUILD UP



PORGEL

[WATCH HERE](#)

sound object



The PORGEL is an site specific organ object, whose pipes are made of tree trunks. It was realized for [Supergau Festival](#) in Austria.



The PULPIT
was built to give the people of Tribsees, a
small village in the north of Germany, a
spot for speeches. Partly it consists of the
material of the destroyed house, where it
grows out of.



PULPIT

wood, broken house



PIPETREE

[WATCH HERE](#)

Sound Object
wood, hoses, leather

PIPE TREE
is an organ object placed in the woods of
New Hampshire, US. It is played by 9
people.



DEICHEL

Tree Trunks with a hole



Pine trunks were drilled horizontally referring to the traditional way of producing water pipes. Some of the pipes were integrated into a bath tube water filter system of the FLOATING UNIVERSITY in Berlin. Others became water and wine dispensers.



B

**VIDEO
THEATRE**



video still

VIDEO FOR THEATRE

[WATCH HERE](#)

(PW: jodorowsky)

video artist for the theatre group of
Vinge/Müller



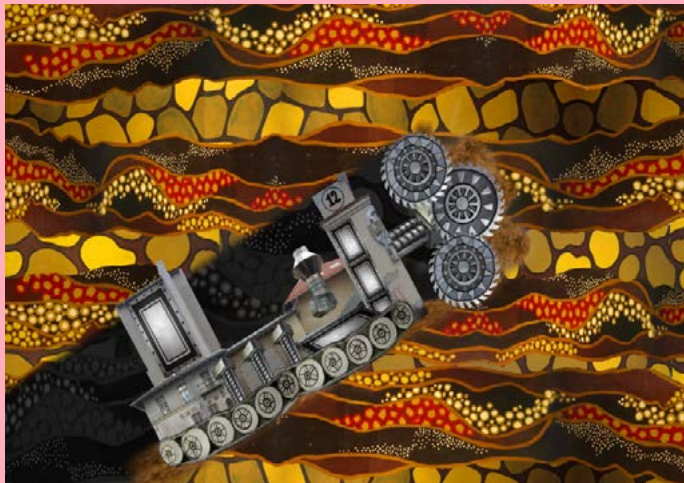
THE WILD DUCK
Festspiele Bergen, NO, 2009
Black Box Teater, Oslo, NO, 2010
Volksbühne Berlin, D, 2011



video stills



JOHN GABRIEL BORKMAN
Volksbühne Berlin, D, 2011
Theatertreffen Berlin, D, 2012



DAS 12 SPARTENHAUS
Volksbühne Berlin, D, 2013

NATIONALTHEATER
REINICKENDORF
Berliner Festspiele, D, 2017

FLORIANGWINNER.DE

Argos Video Distribution
Vimeo

Florian Gwinner, Treptowerstr. 12, 12059 Berlin
0163/ 2501585
gwinner@posteo.de